



SAVING SOUTH CLIFF GARDENS

Monthly Update May 2019

***Hello and welcome to
the South Cliff Gardens
Monthly Update!***

*Here we will share all the most
recent news from the South Cliff*

**South Cliff
Community Group**



Friends of South Cliff Gardens

A great place to live, work & play

SEASONAL SIGHTINGS

What you have spotted in the last month

Photo to the right is by Chris Harper
Gardener Team Leader

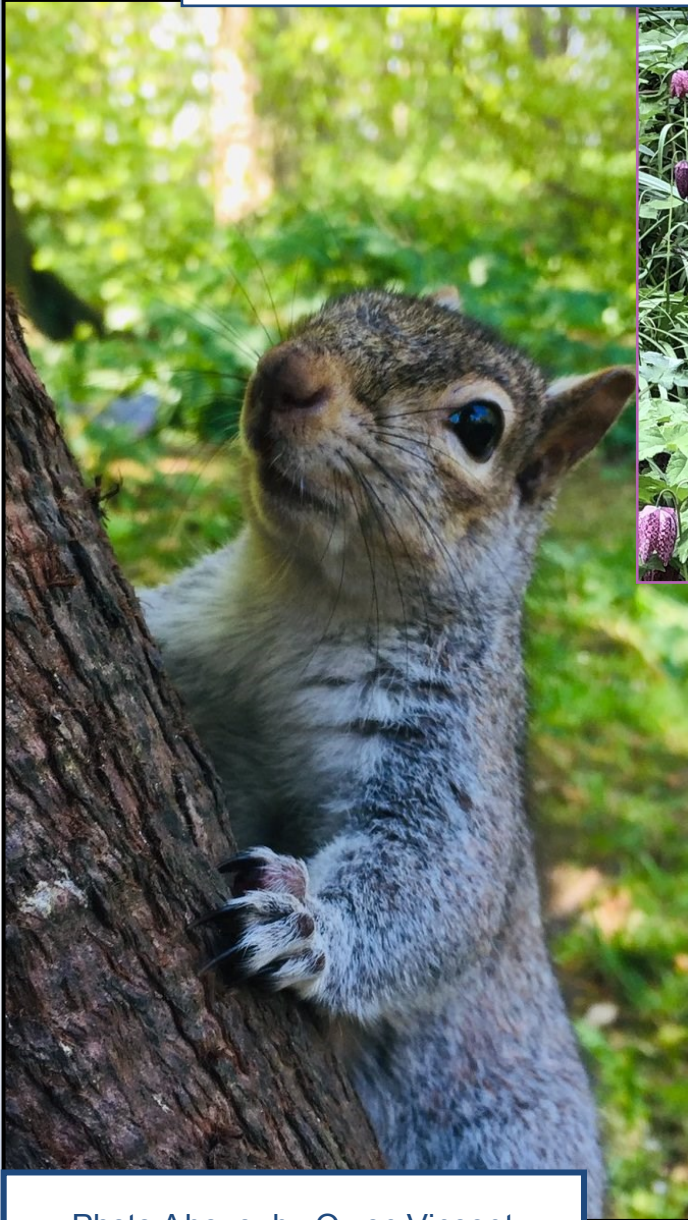


Photo Above by Owen Vincent

Photo below by Ben via twitter



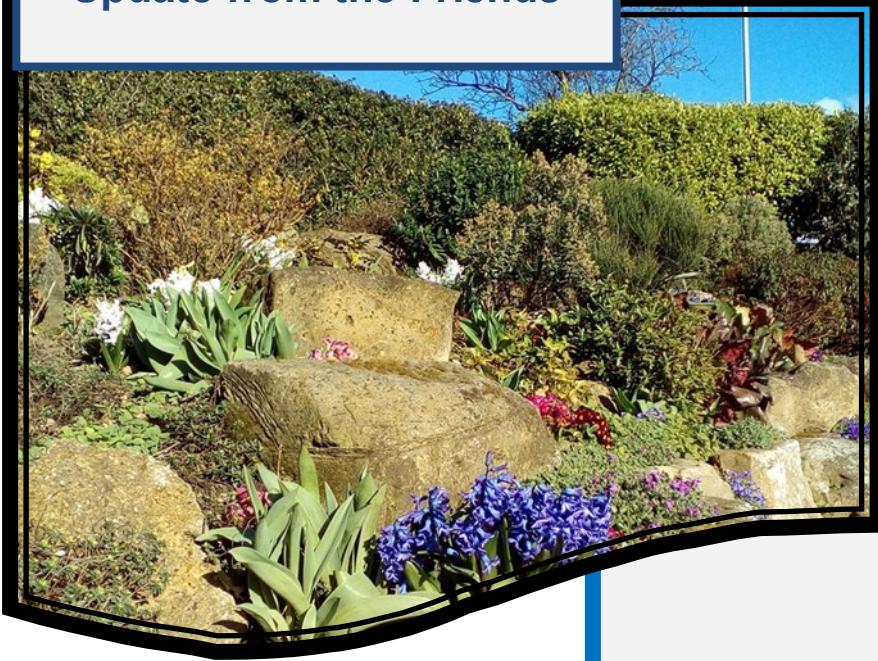
*If you have seen anything interesting in the
South Cliff and would like to share your
photos please send them to:*

victoria.thompson@scarborough.gov.uk

Friends of South Cliff Gardens



Update from the Friends



Prince of Wales rock garden has been wonderful this spring. Lot's of bulbs and the hyacinths with their heady perfume have loved the sunny days. Lots more to come on this rock garden even the yucca getting ready to flower!

Angela Brogan on Facebook remarked:

"Thank you for what you do such beautiful garden I live across from it on the terrace so proud of living here. And grateful of all the hard work what goes in to it!"

The Spa Gardens are not currently accessible due to the large scale stabilisation project which is currently taking place.

However our volunteers are keeping a small area that is still publically accessible tidy.

The daffodils were great and now the perennials have taken over improving the pedestrian pathway to the Spa Complex.

***Thank you
everyone, it is
looking fabulous!***



The work in the pond at Prince of Wales garden is complete and the fountain works perfectly.

This job has taken time but it has been well worth the wait as the pond really looks great and the wonderful sound of the fountain adds that special magic to the beautiful garden.



SouthernGreen

Here's what Southern Green and their team have been working on in April/May.....

- ◆ Working with Balfour Beatty on the reinstatement design of the landscape following the stabilisation works
- ◆ Carrying out further surveying of the shelters
- ◆ Identifying further ecology and environmental surveys needed
- ◆ Finalising the brief for the New Operations Depot
- ◆ Building Control Submission
- ◆ Updating the programme
- ◆ Updating the Risk Register

Great work team!

Project Officer Blog

Lessons Learnt – Power of People

As Project Officer for the HLF South Cliff Gardens renovation project here in Scarborough I have learnt a lot over the development of the project. If I was to focus on the most important message to share it would be the following:

“To achieve great place-making I believe it is absolutely essential to put community at the heart of project governance.”

By this I don't mean have lots of meetings and inviting the community along to 'inform them' of what you are going to do, what I mean is ensuring members of the community have a say on every decision made throughout the project and give them the power to contribute, shape and build the places where they live. Place-making is a hugely powerful tool to use to create positive social change because it inspires people to collectively reimagine and reinvent public spaces and put them right at the heart of their community, bringing people together and creating stronger community cohesion.

When it comes to designing public gardens and green spaces there is so much more to it than just plants, trees, heritage, wildlife, drainage and shelters. Good quality design of public green spaces can construct creative new patterns of use, and shape the cultural and social identity of a garden, allowing it to be future flexible and grow to support not just existing communities but evolving ones in 50 or 100 years' time. The people of North Yorkshire and its visitors have an intimate knowledge of, and connection to their local green spaces. The council's goal for this project was to bring the community together and show them how powerful their collective vision could be and allow them to shape the South Cliff Gardens that they want.

It was 'Dementia Action Week' this month so I thought it would be a good opportunity to put our project's Dementia Experts into the spotlight. Creating communities that are dementia friendly is everyone's job, whether you are a gardener, shop keeper, hotel owner, local authority or local school and the benefits of creating dementia friendly communities positively affects everyone. During the last couple of years local Scarborough volunteers living well with dementia have been shaping the design for the South Cliff Gardens so that it is as dementia friendly as possible.

The volunteers started by carrying out a site audit to look at what elements of the garden worked for people living with dementia and what elements did not and I must admit it was shocking how many barriers were identified that I just would not have noticed or thought about. Recommendations were made on how we could improve the design and I thought it would be really valuable to share this information with you in case you have the opportunity to use it to shape your local community.

Below are the recommendations from Scarborough's Dementia Experts:

1. **Ensure that all people working in parks and gardens have undertaken Dementia Friends training** – For our dementia experts the most important thing is awareness. Dementia can happen to you, your family or your friends. It's important you understand people living with dementia and you know how to help them 'live well' with dementia.
2. **Offer meaningful activities and events** - It's all very well designing beautiful gardens but it's important to actively engage with people and encourage them to contribute meaningfully to their community and outdoor spaces.
3. **Install carefully designed seating** – This should include areas for quiet contemplation and self-reflection, areas for families to rest together and areas that offer an opportunity for informal interaction between people. Make sure your seating is dementia friendly including arms on seats, contrasting colours and a warm material that is comfortable to sit on.
4. **Routes that do not lead to dead ends** – Make sure there's a sense of journey and that all footpaths do not lead to dead ends as people living with dementia can get trapped as some people can forget to turn around. Make sure you disguise service entrances and paths have smooth, level surfaces, with clearly defined edges.
5. **Sensory planting** – Design with the senses using bright colours, textures and architectural form. Stay away from poisonous plants, thorns and colours that blend into each other.
6. **Clearly identifiable spaces** – It's really hard for some people living with dementia to know what a space has to offer. It's not always clear from the outside what you can do or take part in once you enter a space so when designing, make sure you include information at the entrance outlining what's on offer and what's worth seeing. Maps and plans are great for this.
7. **Clear wayfinding** – When entering a green space it's important to have regular clues as to where to go to the main attractions and facilities.
8. **Label the exit!** – This is the most important thing I have learnt about designing public open spaces from people living with dementia. I would have not thought of it without their input. It's often easy to find your way into a space but really hard to find your way out; a simple 'exit this way' sign goes a very long way!
9. **Welcoming spaces** – Make sure you create a safe environment that welcomes in visitors, is clean, tidy, light and bright and free from litter and debris. A well looked after space informally tells the visitor it is a safe place to be.
10. **Choice** – there's mixed research on choice but we like to add in choices. It's important to find a clever way to do this so that people who are further on in their dementia journey can remain safe whilst offering those who have just been diagnosed an opportunity to make their own choices. A good example of this is to have a main accessible path through a green space that's clearly labelled and defined then offer alternative paths in a different material that subtly joins the main path.
11. **Have fun with it!** Fun is so important! Make sure open spaces have an element of fun and humour; you can't take life too seriously and it's important to have a laugh along the way.

DEEP Group and Making Space



If you would like any further information about dementia please get in touch below:

Dementia Action Alliance:

Membership of the alliance is open to any group, organisation or business in Scarborough. Join at: [http://www.dementiaaction.org.uk/join the alliance](http://www.dementiaaction.org.uk/join-the-alliance)

For more information please contact our **DAA Chair, Tim Kirkup**, at timkirkup@hotmail.com or call 07980 290266

For information about the local **DEEP** group get in touch at: <https://www.dementiavoices.org.uk/group/deep-vibes-scarborough/>

Saving South Cliff Gardens Benches Appeal



Across Scarborough's South Cliff Gardens there are over 300 memorial benches commemorating the many people and families who over the years have fallen in love with Scarborough's South Bay. People from across the world have taken out leases for benches to lay down their legacy within the stunning setting of the South Cliff Gardens however over the years some information about these leases has regrettably been lost.

The Scarborough South Cliff Community is appealing for people to come forward and claim their memorial benches. We would like to unlock these hidden personal connections and reinstate their place within the South Cliff Gardens.

In March this year Scarborough Borough Council and the local community were awarded a grant from the National Lottery Heritage Fund to renovate the South Cliff Gardens. The proposed work will include refurbishing some of the benches, and tidying up around some of them to reinstate the stunning views. The modern metal benches will be replaced with heritage equivalent designed benches to be more holistic within this special Victorian landscape.

If you have a lease for a bench within the South Cliff Gardens or on the Esplanade we'd love to hear from you. We'd like to hear your stories and hidden social connections and get your input. In return we will keep you in the loop about our plans for the site and what will happen to your benches.

Please get in touch with us via the contact page at the end of this newsletter.

CONTACT US

Please get in touch

If you're interested in getting involved in the project, would like to know more or you have a great idea, fabulous painting of the South Cliff or an interesting photo please do not hesitate to get in touch with us....

The more people involved the merrier!

Data Gathering

Painting a picture of what the garden looks like now is really important so that we can demonstrate that all the hard work being carried out by our community has made an impact.

We are gathering data through our online visitor survey, visitor interviews and counts, collecting personal stories, wildlife sightings and surveys, old photographs and looking at archives and artworks.

You can find the link to our online survey at:
bit.ly/SCGVisitorSurvey2018

Website: <http://friendsofsouthcliffgardens.com/>

Facebook:
www.facebook.com/southcliffgardens

Twitter: [@HLFSCGardens](https://twitter.com/HLFSCGardens)

Project Officer: Vicky Thompson
victoria.thompson@scarborough.gov.uk

Find out more about the Heritage Lottery Fund here:
<https://www.heritagefund.org.uk/>

